

## TECHNICAL DATA SHEET

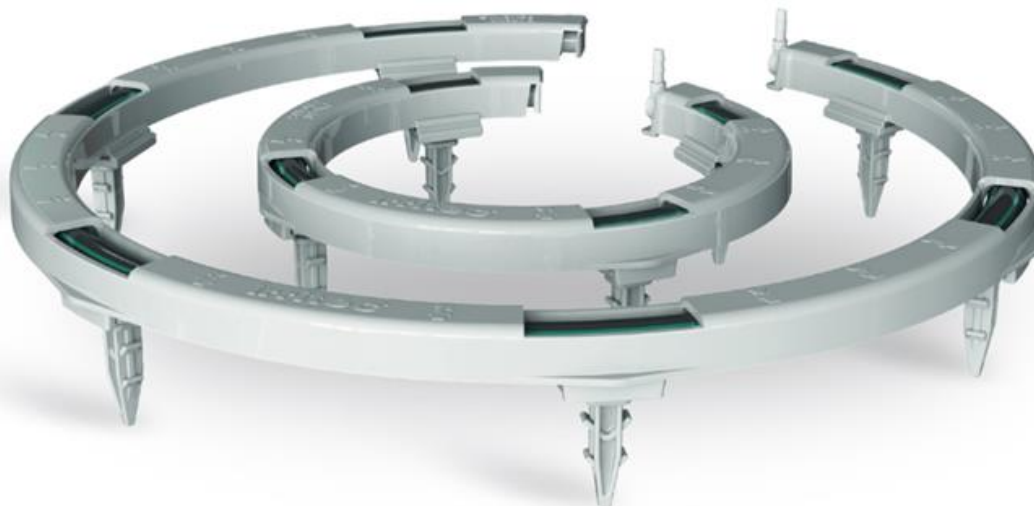
### On line drippers: iCircle™ circular multi-outlet emitter

ICE

#### Product description

iCircle™ circular multi-outlet emitter.

#### Product picture



#### Characteristics

Maximum working temperature: 60 °C.

Maximum working pressure: 4 bar at 20 °C.

The nominal flow rate is function of the chosen installation:

- Installation with iDrop<sup>®</sup> 1 – 2 – 4 – 8 l/h
- Installation with minicoupling offtake 16 l/h

#### Applications

Greenhouse agriculture.



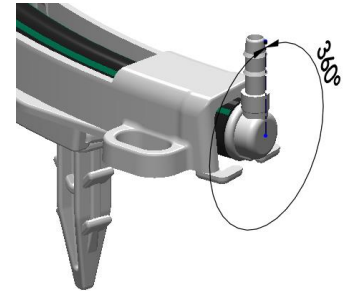
### Benefits, operation, materials

The circular emitter ensures the maximum uniformity of irrigation distribution by equally dividing the flow rate into the number of drip points, 4 or 8 by model.

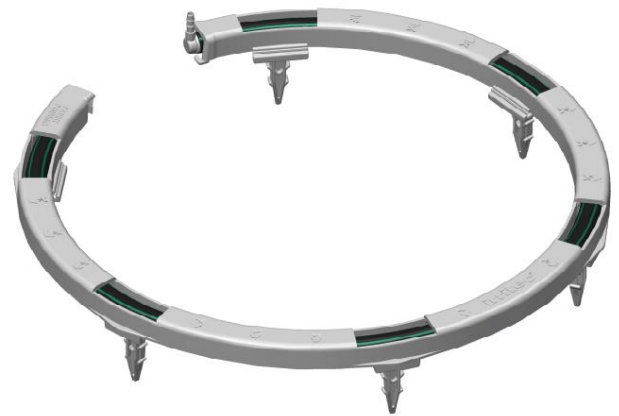
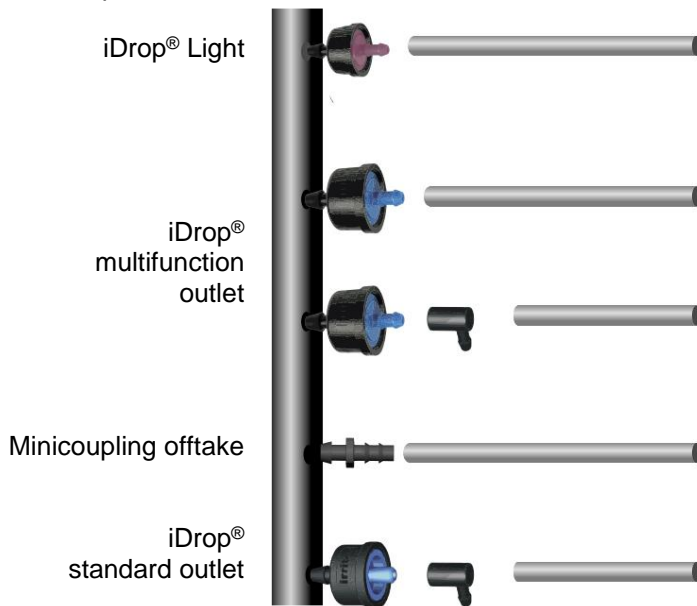
The minidripline inside has a high-performance turbulent labyrinth dripper and an inlet filter with a large filtering surface that prevents the occurrence of occlusion.

The inlet elbow allows a 360° adjustment for the excellent orientation of the micropipe.

The eyelet on the body allows to insert the folded microtube, stopping the iCircle™'s emission.



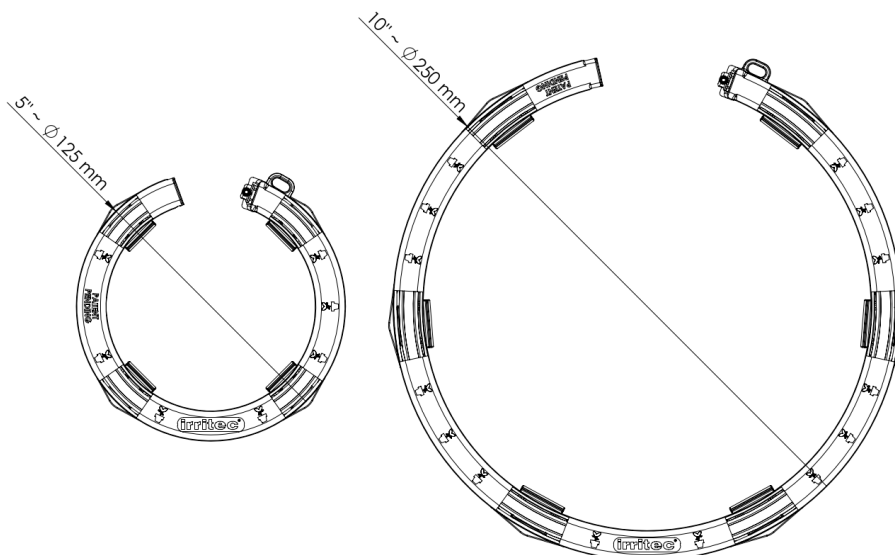
Connection options:



For the connection, use LDPE microtube  $\varnothing 5 \times 3,1$  mm

- Body: grey PP (polypropylene) that guarantees an excellent amount of diffused light, resistant to UV rays.
- Elbow: grey POM (polyacetal resin).
- Minidripline: polyethylene pipe resistant to UV rays and fertilizers commonly used in agriculture.

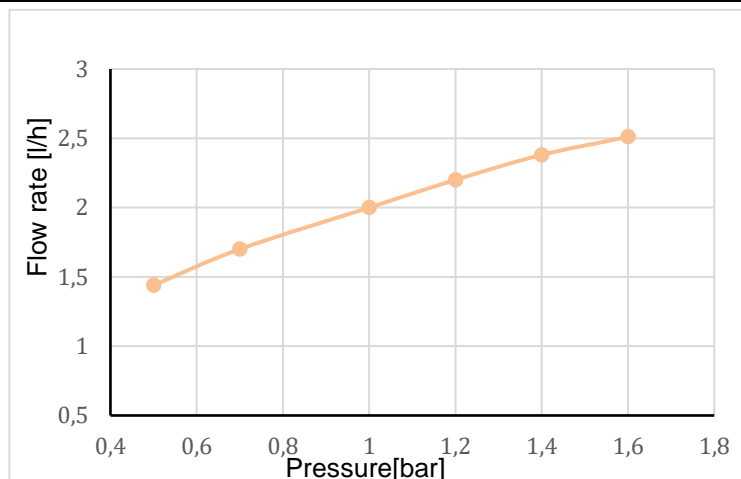
### Technical design



## Technical data

Table 1. – Characteristic of the dripper

Nominal flow rate l/h	Pressure bar					
	0.5	0.7	1.0	1.2	1.4	1.6
2.00	1.44	1.70	2.00	2.20	2.38	2.51



## Applicable standards

Code	Title	Edition	Certificate
ISO 9261	Agricultural irrigation equipment - Emitters and emitting pipe - Specification and test methods	2004	<input type="checkbox"/>

## Use and/or assembly instruction

1. Insert the microtube on the elbow until it passes the barbs;
2. Connect the other end of the microtube to the main pipe according to one of the options shown above.

## Packaging

Table 2.

Size	Pack	Box	Type
125 mm (5")	-	180	B
250 mm (10")	-	60	B

## Notes and Annexes